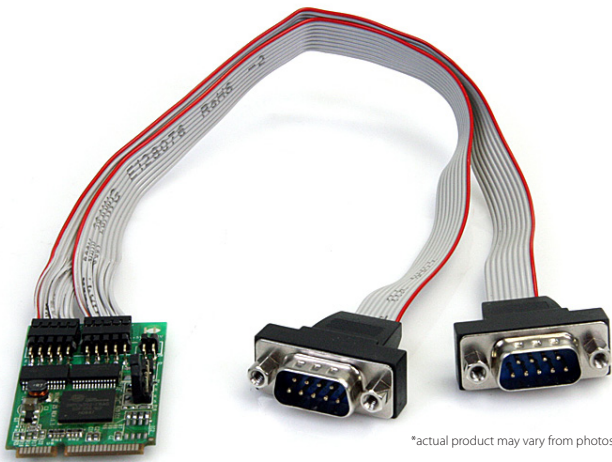


2 Port RS232 Mini PCI Express Serial Card w/ 16950 UART

MPEX2S952



*actual product may vary from photos

DE: Bedienungsanleitung - de.startech.com

FR: Guide de l'utilisateur - fr.startech.com

ES: Guía del usuario - es.startech.com

IT: Guida per l'uso - it.startech.com

NL: Gebruiksaanwijzing - nl.startech.com

PT: Guia do usuário - pt.startech.com

FCC Compliance Statement

This equipment has been tested and found to comply with the limits for a Class B digital device, pursuant to part 15 of the FCC Rules. These limits are designed to provide reasonable protection against harmful interference in a residential installation. This equipment generates, uses and can radiate radio frequency energy and, if not installed and used in accordance with the instructions, may cause harmful interference to radio communications. However, there is no guarantee that interference will not occur in a particular installation. If this equipment does cause harmful interference to radio or television reception, which can be determined by turning the equipment off and on, the user is encouraged to try to correct the interference by one or more of the following measures:

Reorient or relocate the receiving antenna.

Increase the separation between the equipment and receiver.

Connect the equipment into an outlet on a circuit different from that to which the receiver is connected.

Consult the dealer or an experienced radio/TV technician for help.

Use of Trademarks, Registered Trademarks, and other Protected Names and Symbols

This manual may make reference to trademarks, registered trademarks, and other protected names and/or symbols of third-party companies not related in any way to StarTech.com. Where they occur these references are for illustrative purposes only and do not represent an endorsement of a product or service by StarTech.com, or an endorsement of the product(s) to which this manual applies by the third-party company in question. Regardless of any direct acknowledgement elsewhere in the body of this document, StarTech.com hereby acknowledges that all trademarks, registered trademarks, service marks, and other protected names and/or symbols contained in this manual and related documents are the property of their respective holders.

Table of Contents

Introduction.....	1
Packaging Contents.....	1
System Requirements.....	1
Installation.....	2
Hardware Installation.....	2
Driver Installation.....	3
Verifying Installation.....	3
Specifications.....	4
Technical Support.....	5
Warranty Information.....	5

Introduction

The StarTech.com Mini PCI Express Serial Adapter Card enables a free mini PCIe slot to run RS232 DB9 serial ports. Featuring a native PCI Express single-chip design that allows you to take full advantage of PCI Express, and providing improved speed and reliability while reducing the load applied to the CPU by as much as 48% over conventional serial cards which use a bridge-chip design.

Packaging Contents

- 1 x Mini PCI Express Serial adapter card
- 2 x DB9 ribbon cable
- 1 x Driver CD
- 1 x Instruction Manual

System Requirements

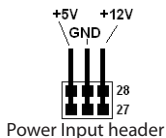
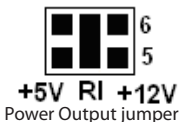
- PCI Express enabled system with available mini PCI Express slot
- Microsoft® Windows® 2000/ XP/ Server 2003/ Vista/ Server 2008 R2/ 7 (32/64-bit), or Linux® kernel 2.4 or later

Installation

WARNING! Computer parts can be severely damaged by static electricity. Be sure that you are properly grounded before opening your computer case. StarTech.com recommends that you wear an anti-static strap when installing any computer component. If an anti-static strap is unavailable, discharge yourself of any static electricity build-up by touching a large grounded metal surface (such as the computer case) for several seconds.

Jumper Configuration

This card is specially designed to allow for power output from the ninth pin of the DB9 connector(s) for devices that support power over serial. This card allows users to set each port with 5V, 12V, or RI (no power) by setting the jumper appropriately. Use the provided adapter cable to connect the power input header to the system power supply.



Hardware Installation

Connect both of the ribbon cables in the respective header connectors on the Mini PCI Express adapter card. The connector on the ribbon cable should be keyed so will only fit one way.

Line up and insert the Mini PCI Express adapter card with the Mini PCI Express slot on the system board. Match up the gap in the card connector, with the notch in the slot.

NOTE: Different systems may have different methods for installing mini cards, so please refer to documentation for your system/board for full installation instructions for your particular application.

Driver Installation

Windows 2000/XP/Server 2003

When the Found New Hardware wizard appears on the screen, insert the Driver CD into your CD/DVD drive. If you are prompted to connect to Windows Update, please select the “No, not this time” option and click Next.

Select the option “Install Drivers Automatically (Recommended)” and then click the Next button.

Windows should now start searching for the drivers. Once this has completed, click the Finish button.

Windows Vista/7

When the Found New Hardware window appears on the screen, click on the “Locate and install drivers software (recommended)” option. If prompted to search online, select the “Don’t search online” option.

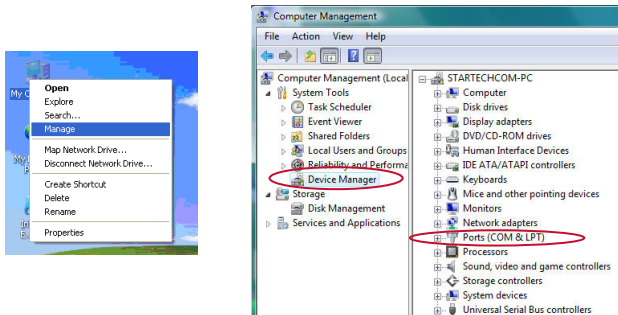
When prompted to insert the disc, insert the Driver CD that came with the card, into your CD/DVD drive and Windows will automatically proceed to search the CD.

If a Windows Security dialog window appears, click the “Install this driver software anyway” option to proceed.

Once the driver is installed, click the Close button.

Verifying Installation

From the main desktop, right-click on “My Computer” (“Computer” in Vista/7), then select Manage. In the new Computer Management window, select Device Manager from the left window panel.



Double-click on the “Ports (COM & LPT)” option. The appropriate number of additional COM ports should be visible. The port(s) are ready to connect to new devices.

Specifications

Bus Interface	PCI Express rev 1.1
Chipset ID	PLX OXPCIe952
Serial UART	16C950
Connectors	2 x DB9 male (via external ribbon cable)
Serial Protocol	RS232
Maximum Data Transfer Rate	460 Kbps
Operating Temperature	-20°C ~ 85°C (-4°F ~ 185°F)
Storage Temperature	-40°C ~ 85°C (-40°F ~ 185°F)
Humidity	5% ~ 85% RH
Dimensions	50.0mm x 30.0mm
Weight	6g
Compatible Operating Systems	Windows 2000/ XP/ Server 2003/ Vista/ Server 2008 R2/ 7 (32/64-bit), Linux kernel 2.4 or later

Technical Support

StarTech.com's lifetime technical support is an integral part of our commitment to provide industry-leading solutions. If you ever need help with your product, visit www.startech.com/support and access our comprehensive selection of online tools, documentation, and downloads.

Warranty Information

This product is backed by a lifetime warranty.

In addition, StarTech.com warrants its products against defects in materials and workmanship for the periods noted, following the initial date of purchase. During this period, the products may be returned for repair, or replacement with equivalent products at our discretion. The warranty covers parts and labor costs only. StarTech.com does not warrant its products from defects or damages arising from misuse, abuse, alteration, or normal wear and tear.

Limitation of Liability

In no event shall the liability of StarTech.com Ltd. and StarTech.com USA LLP (or their officers, directors, employees or agents) for any damages (whether direct or indirect, special, punitive, incidental, consequential, or otherwise), loss of profits, loss of business, or any pecuniary loss, arising out of or related to the use of the product exceed the actual price paid for the product. Some states do not allow the exclusion or limitation of incidental or consequential damages. If such laws apply, the limitations or exclusions contained in this statement may not apply to you.

StarTech.com

Hard-to-find **made easy**®

Hard-to-find made easy. At StarTech.com, that isn't a slogan. It's a promise.

StarTech.com is your one-stop source for every connectivity part you need. From the latest technology to legacy products — and all the parts that bridge the old and new — we can help you find the parts that connect your solutions.

We make it easy to locate the parts, and we quickly deliver them wherever they need to go. Just talk to one of our tech advisors or visit our website. You'll be connected to the products you need in no time.

Visit **www.startech.com** for complete information on all StarTech.com products and to access exclusive resources and time-saving tools.

StarTech.com is an ISO 9001 Registered manufacturer of connectivity and technology parts. StarTech.com was founded in 1985 and has operations in the United States, Canada, the United Kingdom and Taiwan servicing a worldwide market.